

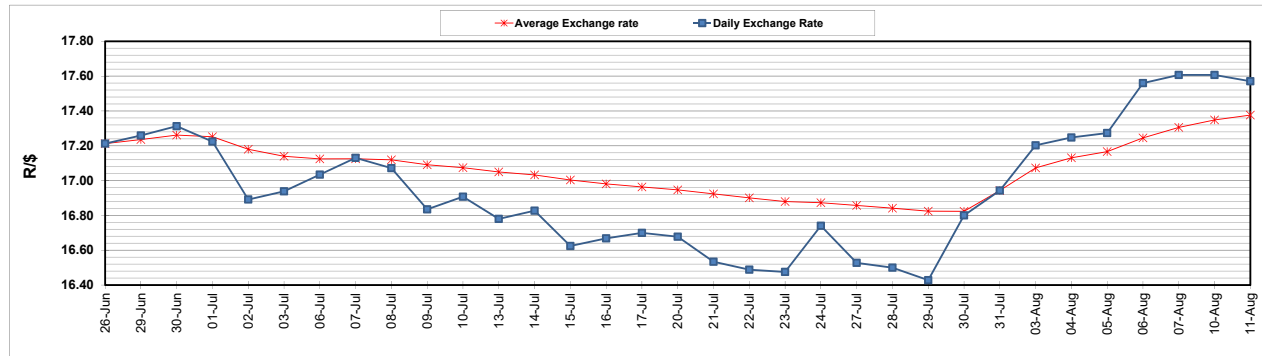
	PETROL 95 ULP	PETROL 93 ULP & LRP	DIESEL 0.05%	DIESEL 0.005%	ILL. PAR.
GAUTENG PUMP PRICE (SA c/l) AS FROM 05/08/2020	1,517.000	1,488.000	-	-	-
WHOLESALE PRICE (SA c/l) AS FROM 05/08/2020	-	-	1,348.560	1,352.960	742.828
SINGLE NATIONAL MAXIMUM RETAIL PRICE	-	-	-	-	934.000
BASIC FUEL PRICE - 11/08/2020 (SA c/l)	576.158	565.373	586.439	590.691	519.248
PRESS RELEASE CONTRIBUTION TO BFP 05/08/2020 - 11/08/2020 (SA c/l)	569.770	550.770	597.630	602.030	538.128
UNIT OVER/(UNDER) RECOVERY - 11/08/2020 (SA c/l)	(6.388)	(14.603)	11.191	11.339	18.880
AVERAGE BASIC FUEL PRICE 31/07/2020 - 11/08/2020	553.688	543.741	578.876	583.110	515.903
AVERAGE UNIT OVER/(UNDER) RECOVERY 31/07/2020 - 11/08/2020	14.207	5.154	1.879	2.045	7.600

ANALYSIS MOVEMENT OF AVERAGE OVER/(UNDER) RECOVERY

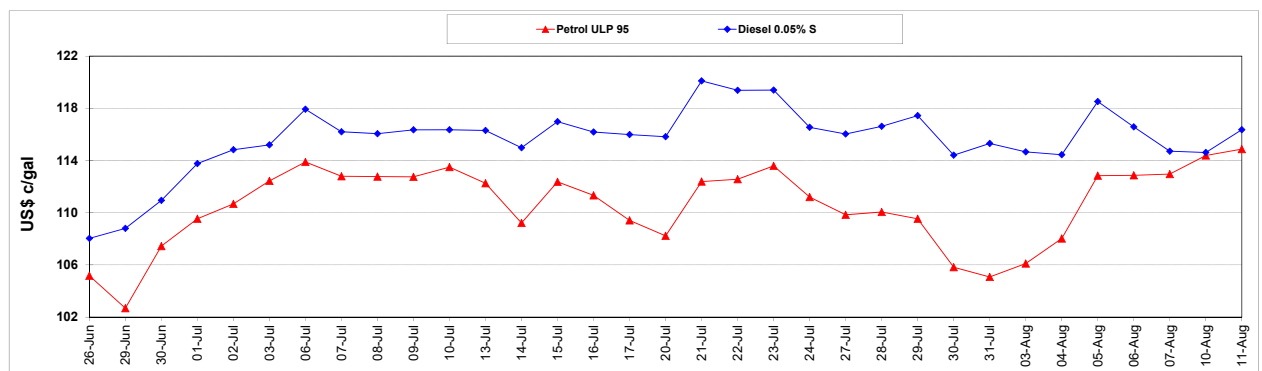
	PETROL 95	PETROL 93	DIESEL 0.05%	DIESEL 0.005%	ILL. PAR.
- MOVEMENT IN INTERNATIONAL PRODUCT PRICES	31.825	22.455	20.298	20.599	20.016
- MOVEMENT IN EXCHANGE RATE	(17.618)	(17.301)	(18.419)	(18.554)	(16.416)
AVERAGE UNIT OVER/(UNDER) RECOVERY 31/07/2020 - 11/08/2020	14.207	5.154	1.879	2.045	7.600

R/\$ EXCHANGE RATE - (R/\$17.5705 - 11/08/2020)

EXCHANGE RATE USED IN BASIC FUEL PRICE



INTERNATIONAL PRODUCT PRICES OF BASKET USED IN BASIC FUEL PRICE



BASIC FUEL PRICE IN SA CENTS PER LITRE

